

Antique Sale by Auction



**For Sale by Public Auction – over 800 Lots of
Period Furniture, Silver & Silver Plate, Books,
Pictures, Prints,
Jewellery, Porcelain and many Collectors Items**

**At the Corn Exchange Chambers, Market Rasen
On Thursday 14th April 2011
commencing at 9.30am**

**Viewing:
Sunday 10th April 9.30am-12.30pm
Wednesday 13th April 2pm-7pm
and from 8am on morning of sale**



Perkins, George Mawer & Co.

**Chartered Valuation Surveyors & Estate Agents
Agricultural & Fine Art Auctioneers & Valuers**



Order of Sale and Contents

General, Mainly Small Collectables Lots 1 - 125

Pottery & Porcelain Lots 126 - 208

A Private Collection of Valuable Pot Lids Lots 208 - 305

**A Valuable Private Collection of Claret Jugs
Lots 306 - 312**

Books Lots 315 - 394

Items Of Interest to the Collector Lots 395 - 504

Fishermans Corner Lots 505 - 529

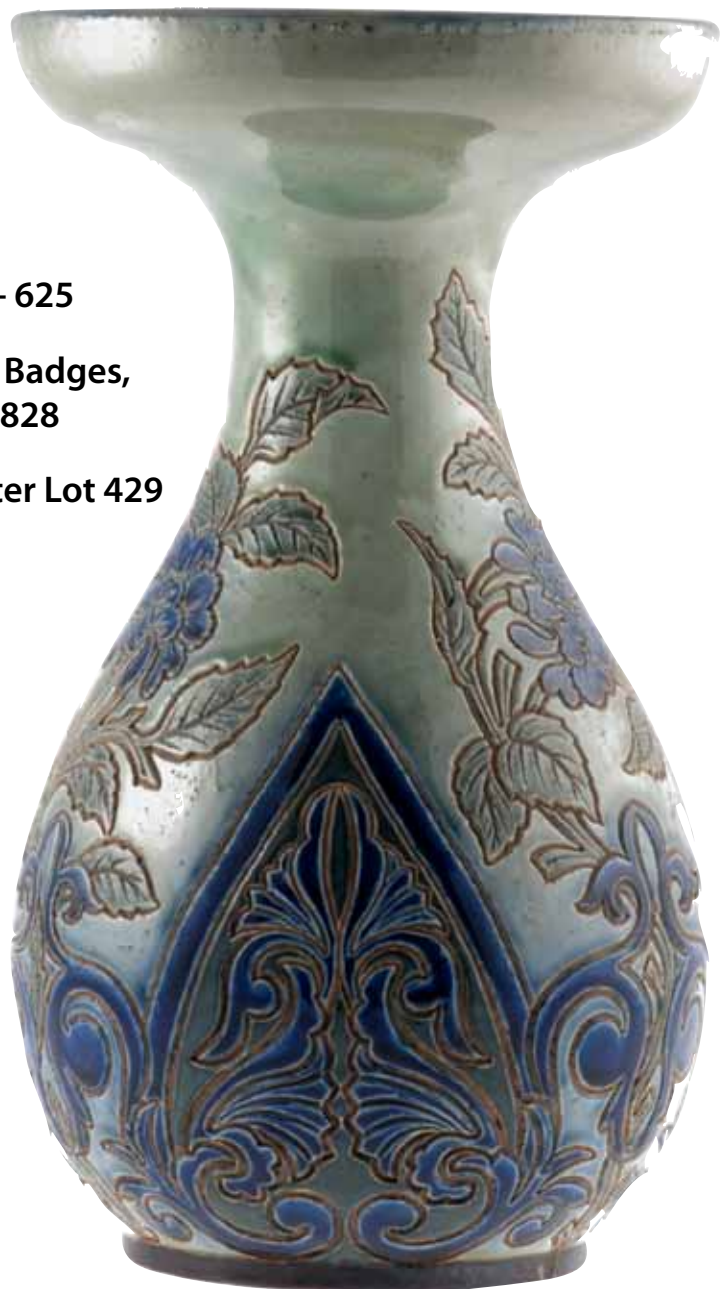
Wooden Collectables Lots 530 - 557

**Barometers, Clocks & Binoculars
Lots 508 - 579**

Pictures, Prints, Mirrors, Etc Lots 580 - 625

**Jewelry, Silver, Silver Plate, Watches, Badges,
Coins & Small Collectables Lots 629 - 828**

Lots 830 - 883 Will be sold directly after Lot 429





Introduction

The sale will commence at 9.30am promptly with items of bric-a-brac and small collectables followed by the sale of ceramics, collectors items, pictures, prints, jewellery, silver and silver plate ending with antique and household furniture.

The sale will follow in catalogued order from Lot 1 with no intermission for lunch. The Auctioneers normally average 100 Lots an hour but cannot guarantee the time of sale of each Lot and prospective purchasers are advised to arrive at the sale in good time prior to the auction of the Lot that is required. Perkins, George Mawer & Co. are happy to undertake commission bids on behalf of prospective purchasers not able to attend the sale and a telephone buying service is available. Estimates of value of the principal Lots on offer will be available at the time of the various viewings.



GENERAL, MAINLY SMALL COLLECTABLES

- 1 7 plated ale tankards
- 2 3 ships in a bottle, Buchanan stoneware blue and white fruit bowl, George VI QE II Coronation mugs etc.
- 3 Selection of miniature cat and other animal ornaments
- 4 Selection of 15 lidded handled stone decorative Stein ale tankards
- 5 Selection of 5 'Penny Piece' LP records
- 6 Rectangular mirror in ornate inlaid walnut frame
- 7 Selection of 8 decorative multi-coloured coffee cups and saucers
- 8 Mixed plateware including teapot, toast rack, hot water jugs etc.
- 9 2 trays of mixed drinking glasses including ale jars, Elgin sherries, cut glass wines etc.
- 10 Sundry plateware including 2 plated one pint ale tankards
- 11 Selection of miniature ornaments, coffee cans etc.
- 12 Tray of commemorative mugs including Edward VII Coronation jug
- 13 White Lloyd Loom linen basket with padded seat
- 14 Large decorative gilt framed bevel edged wall mirror
- 15 Pair of milk glass dressing table vases, part 'Old Royal' bone china tea service etc.
- 16 Oak stool with padded top
- 17 Selection of miniature ornaments, dolls house furniture etc.
- 18 Magpie lot of mixed plated cutlery, spirit decanter, brass weight etc.
- 19 4 boxes of plated cutlery etc.
- 20 Desk filing cabinet, selection of framed sepia prints etc.
- 21 Large wall mirror in decorative beaded gilt and mirrored frame
- 22 Bristol Owners Club cd and a selection of hardbacks on various motor car subjects etc.
- 23 Classic oven to table serving dish in original box
- 24 Selection of 6 Bohemian glass wine goblets in original box
- 25 2 plated serving dishes both in original boxes and boxed set of table mats
- 26 Approximately 44 pieces of a part Albion Pottery blue and white dinner service
- 27 Two boxes of trade cards, Beatrix Potter prints, Observers book - Horses and Ponies etc.
- 28 Oval cobalt blue surround meat dish and two matching lidded vegetable tureens
- 29 Wade Whimsies display of 20 individual c.1950's animal ornaments
- 30 Selection of 6 individual decorative water jugs, white Meakin coffee pot
- 31 Selection of mixed crockery from popular factories
- 32 Variety of small collectables including Queen Mother Commemorative lidded pot, Sylvac vases etc.
- 33 Collectors lot of mixed miniatures from popular factories
- 34 Canteen of Viners cutlery
- 35 Mixed crockery including Wedgwood dressing table dishes etc.
- 36 Tray of sundry metalware including 3 graduated copper measuring jugs
- 37 Treenware and wooden collectables including cribbage board, dice box, brass level etc.
- 38 3 piece blue and white Victorian teaset, black ground musical jewellery box
- 39 Decorative oval metal framed toilet mirror and ladies handbag
- 40 2 decorative coloured glass carafes, stoneware hot water bottle, Royal Worcester silvered teapot etc.
- 41 Decorative green ground Beswick fruit bowl, salad and celery dish etc.
- 42 2 large coloured prints of Highland Cattle and Sheep
- 43 Pair of woodland prints in plain oak rectangular frames
- 44 Pair of gilt framed fireside prints each of an elderly couple signed Alex Austen
- 45 Selection of Royal Doulton and other decorative plates
- 46 Harmonica in original box, christmas tree decorations and a Corgi weetabix van in original box
- 47 Selection of camera accessories in black leather carrying case
- 48 Pair of hunting plaques, decorative celebration QE II and Emma Bridgewater plates, etc.
- 49 Miniature dressing table pieces including Withernsea and Sylvac specimen vases etc.
- 50 3 decorative Japanese blue and white side plates
- 51 Lissco 9 piece dressing table set in original rectangular presentation box
- 52 Selection of miniature animal ornaments etc.
- 53 Rafia weave needlework basket and contents
- 54 8 stainless steel presentation wine goblets
- 55 2 pairs of mantelpiece figurines
- 56 Magpie lot of miniature crockery, Torquay ware, magnifying glasses etc.
- 57 Cart horse ornament
- 58 Collection of individual bird and animal ornaments including a Beswick greenfinch
- 59 Lady Godiva ornament on rectangular plinth
- 60 Selection of 4 gilt framed coloured flower prints
- 61 Pair of framed wildflower countryside prints
- 62 4 various coloured countryside flower prints
- 63 Various QE II and other 20th century Royal Family commemorative mugs etc.
- 64 Delicate 6 piece teaset including serving tray
- 65 Collection of coloured glass cherub wall sconce, nutcrackers etc.
- 66 Leonardo figure of a tramp and 4 other character figurines
- 67 Newlong portable bag closer, model NP-7, with instruction manual
- 68 Selection of decorative glass ware items
- 69 Various cut glass wine and sherry glasses
- 70 Set of Royal Doulton religious plates each with certificate of authenticity, Aynsley china ware etc.

- 71 Tray of mixed cut glass
- 72 Tray of coloured glass including Friday glass clown ornament etc.
- 73 Selection of 6 decorative teapots
- 74 Selection of 8 decorative teapots.
- 75 Mixed crockery including Royal Worcester coddlers petal and kingfisher ornament etc.
- 76 Collection of 9 individual teapots, Telford ware milk jug etc.
- 77 Collection of 7 individual teapots from popular factories including Price, Sadler and Royal Winton, gold affect Royal Winton Grimwade boat shaped vase
- 78 Selection of 8 comical and other teapots, including cavalary man and pirate pot
- 79 Soapstone pedestal ornament of youth carrying a horn
- 80 Magpie lot of mixed crockery, carved wooden animals, Capio Di Monte figurines etc.
- 81 Mixed crockery, Stein ale glass, barometer etc.
- 82 Selection of Royal Family Commerative ware
- 83 Volume 'Britians Countryside Through The Seasons,' 'The Ever Changing Woodlands' etc.
- 84 5. Vols. 'Poets of The English Language' and another of the selected poems of John Clare
- 85 Selection of 6 gilt framed coloured flower pictures
- 86 3 gilt framed and 3 other flower prints
- 87 8 Red Arrows and other aircraft videos
- 88 9 hardback volumes of historical warfare in the air including 'The History of the RAF' by Chaz Bowyer
- 89 Large selection of china coffee mugs etc.
- 90 Selection of miniature baskets
- 91 Selection of cut glass including wine and water drinking glasses
- 92 Pair of black painted spaniel mantelpiece ornaments
- 93 Miniature pine chest of 2 short and 2 long drawers
- 94 Enamel flour bin
- 95 Boxed Rolf Harris stylophone, 2 gilt framed oval plaques
- 96 Selection of boxed and loose cutlery
- 97 Boxed cutlery
- 98 2 rectangular wooden panels painted Dutch girl and boy
- 99 Plated tea set, cruet and boxed pair of plated backed hairbrushes
- 100 Carrying case of L.P. records
- 101 Tray of commemorative Royal Family mugs and others
- 102 Large selection of cd's
- 103 Part Barratts delphatic blue and white ground dinner service (30 pieces)
- 104 Colclough bone china 6 piece tea set (21 pieces) and a 6 place setting 'Gainsborough' bone china tea set
- 105 4 Original boxed items including a Mele jewel case,' Kaitie' Allglow carving set etc.
- 106 Collectors lot of stoneware hot water bottles, jars, green glass bottles etc.
- 107 Cylindrical cut glass flower vase and other glass ware
- 108 Ekco mid 20th century 3 band radio
- 109 Early 20th century Mullard valve radio in bakerlite case
- 110 'New World' singer sewing machine in cream plastic cover
- 111 Cast iron handled stew pot and contents including a pair of early 20th century ice skates
- 112 Selection of ladies cosmetics, roll of cotton wool etc.
- 113 Mixed crockery from popular 20th century factories
- 114 Mixed crockery including an Arthur Wood lustre multicoloured cylindrical vase
- 115 Royal Family memorabilia including Princess Diana Legacy plate etc.
- 116 6 piece blue glass dressing table set
- 117 Box of old tins
- 118 2 garden forks & spades
- 119 Garden hoe, rake, edger etc.
- 120 Box of brown earthenware vessels, mixed pottery
- 121 Brown earthenware vessels, mixed crockery
- 122 Brown stoneware trade bottles, salt glazed hot water bottle, etc.
- 123 Box of green glass trade mineral bottles
- 124 Mixed brass and plateware
- 125 Telescope, mallet, cattle horns, etc.
- POTTERY & PORCELAIN**
- 126 Magpie lot of crockery, Parkinson Butterscotch tin, etc.
- 130 Hand painted gazunda
- 131 Hornsea and Sylvac pottery etc., Thorne's sweet tin
- 132 Boxed Matchbox toys, 4 small figurines
- 133 Wade Whimsies, Wade vases, 6 Robertson Marmalade musicians
- 134 De Pallissy 14 piece 'Harebell' coffee service, Maling jug, pair Sadler jugs, etc.
- 135 Magpie lot incl. King George V Silver Jubilee chocolate tin, Tykes mug, Coronation ware, Wedgwood atomiser, etc.
- 136 *DOULTON BURSLAM 'ALMA' CREAM GROUND DINNER SERVICE WITH DECORATIVE COBALT BLUE & RUST BROWN DECORATION (54 PCS)*
- 137 4 pc pink rose garland toilet set
- 138 Chased silver lustre teapot & stand, milk jug and damaged sugar basin
- 139 Large blue & white willow pattern meat charger
- 140 Crown Ducal ware part dinner service, cream ground decorated gilt & maroon border (approx. 65 pcs)
- 141 Matching set Crown Ducal coffee cups & saucers (36 pcs) and almost matching part tea set (8 pcs)
- 142 12 brown lidded Denby stoneware pots, decorative handled dish
- 143 Part Royal Staffordshire dark red rose bone china tea service (no pot) approx. 36 pcs
- 144 Mixed crockery incl. Crown Devon and Clarence ware fruit dishes etc.
- 145 Ivory ware 13 pc fruit set, blue & white cheese dish, onion jar, etc.
- 146 Set of 13 Imperial Jingdezhen porcelain decorative plates in original boxes each with certificates of authenticity

- 147 Wedgwood cricket match decorative plate, Royal Doulton 'The Haywain', both with certificate of authenticity and 3 others
- 148 Copeland Spode Italian Pottery 3 compartment bonbon dish, 2 kidney shaped hors-d'oeuvre dishes (lozenge pattern)
- 149 Copeland Spode Italian pattern coffee & tea service with pot (lozenge pattern) 40 pcs
- 150 Blue & white Copeland Spode Italian pattern pedestal circular fruit dish, rectangular bread & butter dish and 3 other pieces (of similar age)
- 151 T G Green & Co. cornish ware blue & white mixing bowl
- 152 Large T G Green & Co. milk jug in similar style
- 153 Decorative double-handled planter and another with multi-coloured raised decoration
- 154 3 glass decanters, stemmed wines, etc.
- 155 Royal family celebration ware, willow patterned fruit bowl etc.
- 156 Edwardian brown mottled lamp shade
- 157 Pair Cambridge blue milk glass lamp shades
- 158 Conical jelly mould and 2 others
- 159 Brown treacle ware glass flower vase
- 160 8 pc Victorian dressing table set
- 161 Spaniel dog mantlepiece ornament, lidded conserve pot, glass sugar basin, etc.
- 162 Magpie lot of pr. opera glasses, Meerschaum pipe, vesta box, etc.
- 163 Brown stone ware jug vase, spirit keg, green boat shaped vase
- 164 Yellow & brown planter on raised pedestal
- 165 4 tortoiseshell effect dressing table pieces
- 166 Magpie lot of leather purses, wallets, etc.
- 167 Pair Shelley decorative bone china dressing table dishes
- 168 2 blue and white Delft early 19th Century creamers
- 169 Decorative Clarice Cliff wall pocket vase - Lady in Crinoline dress design
- 170 6 Royal Family decorative pieces including Edward VIII coronation mug
- 171 7 Royal Family decorative mugs Queen Victoria to George V
- 172 Carlton ware light blue ground lidded conserve pot
- 173 Decorative 'Manilla' lustre milk jug, a blue and purple Elizabeth Radford hand painted cylindrical flower vase
- 174 Oval soapstone jewellery box with raised decoration the interior lined with mirror to lid
- 175 Sylvac pebble vase, brown ground Oriental ginger jar (no lid) and embossed brown ground damaged mug
- 176 Selection of sauce boats, bon-bon dishes, yellow ground Crown Devon leaf shaped fruit plate etc. (7 pieces)
- 177 Decorative Royal Doulton wall plate, Wedgwood posy vase and 2 Copeland Spode plates
- 178 Blue and white Oriental fruit bowl and damaged blue and white specimen vase
- 179 4 various pierced ribbon plates
- 180 Decorative cobalt blue ground pedestal fruit dish and 2 matching plates
- 181 3 blue and white Minton 'Delft' plates
- 182 6 'Granada' white ground cobalt blue surround dessert and meat plates
- 183 Blue and white 'Delft' caravan ornament
- 184 Blue and white Greek traditional patterned handled warming plate
- 185 Multi-coloured Wedgwood serving dish, pagoda patterned bowl and 4 other decorative plates
- 186 Miniature tea-pot with transfer of Lincoln Cathedral, Edwardian cricket vase, presentation pot
- 187 Royal Family decorative ware including Queen Victoria Diamond Jubilee teapot stand and 2 mugs, Edward VII Coronation teapot (8 pieces)
- 188 Sevres hand painted cerise and gilt ground lamp holder
- 189 Selection of principally Royal Family commemorative ware including a Queen Mary jug vase, Edward VIII Coronation mugs etc. (15 pieces)
- 190 Mixed Royal Family commemorative ware principally of George VI
- 191 Decorative white ground tulip shaped vase with raised decoration
- 192 QE II 60th birthday celebration plate and 2 QE II coronation mugs
- 193 World War I peace mug, George V and George VI commemorative mugs
- 194 Set of 6 decorative 19th Century Spode dinner plates
- 195 11 green ground leaf plates
- 196 Pair of green oak leaf rectangular serving dishes, each 7" x 10"
- 197 Green ground leaf shaped serving dish
- 198 Lladro figure of a sleepy child
- 199 Lladro figure of bonneted young girl with her spaniel puppy
- 200 Lladro figure of a bonneted young girl in long flowing dress
- 201 Lladro figure of a bonneted young girl with a basket of flowers
- 202 Lladro figure of a young girl wrapped in a bath towel
- 203 Lladro figure of a young girl with bird and posy vase in hand
- 204 Lladro figure of a young girl holding a cat
- 205 Royal Cauldon 9 place setting cream ground dinner service with blue dragon and leaf decoration (43 pieces) including 3 graduated meat plates and 2 lidded vegetable tureens
- 206 Unused Ridgeway bone china 'Mozel' patterned tea service with garland green leaf decoration (6 place setting) 1 missing saucer purchased 1968
- 207 Selection of blue ground and green ground Wedgwood dressing table pieces (10 pieces in all)
- 208 Decorative cream ground water jug with embossed hunting scene decoration
- A PRIVATE COLLECTION OF VALUABLE POT LIDS INCLUDING:**
- 209 Mid 19th Century Pratt Factory 'Bear, Lion and Cock' lid (Number 19) and 3 other small underglazed

- multicoloured lids inc. 'The Outs' (Number 16)
- 210 Larger mid 19th Century pot lid ex. F & R. Pratt 'A letter from The Diggings' (Number 360) another multicoloured pot lid 'Persuasion' (Number 353)
- 211 Large pot lid ex. Austin & Pratt 'The Trooper' (Number 334) and another 'Embarking for the East' (Number 206)
- 212 Garibaldi lid ex. F & R. Pratt 'Mounting the Flag' number (Number 169)
- 213 Large pot lid 'War' ex. F & R Pratt and J. Austin from the painting of Sir Edwin Landseer (Number 219)
- 214 Crimean War subject lid by F & R. Pratt 'Allied Generals' (Number 168)
- 215 Large pot lid issued by F & R. Pratt 'The Village Wedding' (Number 240) another 'The poultry Woman' (Number 349)
- 216 Pair of large pot lids from the Pratt Factory 'Pretty Kettle of Fish' (Number 48) and 'Lobster Sauce' (Number 49)
- 217 3 large pot lids from F & R Pratt 'The Best Card' (Number 254), 'Hide & Seek' (Number 255) and 'The Battle of the Nile' (Number 210)
- 218 3 large lids 1 in black painted wooden frame of Shakespeare subjects, Shakespeare's birthplace (exterior) (Number 226), Shakespeare birthplace (interior) (Number 227), Anne Hathaways cottage (Number 228)
- 219 Large lid 'Ningpo River' (Number 222) and 'Wimbledon - National Rifle Association First Meeting 1860' (Number 224)
- 220 Lid ex. F & R. Pratt of 'Holborn Viaduct' (Number 202) and another ex. F & R. Pratt of 'Albert Memorial' (Number 191), another of Trafalgar Square (Number 201)
- 221 A large lid ex. F & R. Pratt of 'The Dublin Industrial Exhibition 1853' (Number 143) another smaller of 'The Paris Exhibition 1878' (Number 148) and another of 'The Philadelphia Exhibition 1876' (Number 147)
- 222 2 19th Century lids ex. F & R. Pratt 'The First Appeal' (Number 329) and 'The Second Appeal' (Number 330) both with texts depicting a courting couple
- 223 A lid ex. F & R. Pratt 'On Guard' (Number 340) and another mid 19th Century pot 'The Irishman' from a painting by F. Goodall (Number 357)
- 224 Large lid from the Pratt factory c. 1860 'The Queen, God Bless Her' (Number 319)
- 225 Large mid. 19th Century lid ex. F & R. Pratt 'The Picnic' (Number 354) another smaller marked Pratt Factory of 'The Prince of Wales visiting the Tomb of Washington' (Number 310)
- 226 Mid. 19th Century pot ex. F & R. Pratt 'The Red Bull Inn' (Number 359) and another of 'The Snowdrift' (Number 276) and another 'The Waterfall' (Number 365)
- 227 4 fishing subject lids 'Examining the Nets' from the Pratt factory (Number 54), 'Mending the Net' from the Mayer factory (Number 56), 'Hauling in the Trawl' from the Pratt factory (Number 53) and another larger 'Landing the Catch' (Number 55)
- 228 3 framed lids 'The 7 Ages of Man' (Number 230), 'Peasant Boys' (Number 348) and a smaller lid 'The Volunteers' (Number 214)
- 229 Ebony framed lid 'A Pair' (Number 252), another valuable framed pot lid ex. F & R. Pratt 'The Dentist' (Number 323)
- 230 Framed pot lid of 'Dr. Johnson' (Number 175), another of 'The Shrimpers' (Number 63)
- 231 A pair of framed lids from the Cauldon factory mid 19th Century, 'The Shepherdess' (Number 325) and 'The Shepherd Boy' (Number 326)
- 232 Framed pot lid 'The Enthusiast' ex. F & R. Pratt (Number 245), unframed lid (with chip) 'Good Dog' (Number 265)
- 233 Repaired rectangular paste pot and lid of equestrian scene
- 234 Black and white spaniel mantelpiece ornament
- 235 Beswick leaping salmon ornament (Number 206)
- 236 Beswick brown trout and shell ornament (Number 30)
- 237 Royal Doulton figurine of a young child with spaniel dog 'Hometime' (Number HN3685)
- 238 Royal Doulton figurine of lady in white crinoline dress 'Heather' (Number HN2956)
- 239 Royal Doulton figurine of a lady in brown patterned crinoline dress 'Geraldine' (Number HN2348)
- 240 Royal Doulton figurine of a lady in green evening dress with muff 'Grace' (Number HN2318)
- 241 Large Royal Worcester figure of a Jay (Number 3248)
- 242 Large Worcester figure of a Green Woodpecker (Number 3249)
- 243 Selection of 4 Royal Worcester miniature bird ornaments, Kingfisher (Number 3235), Goldfinch (Number 3239), Chaffinch (Number 3240) and a Nuthatch (Number 3334)
- 244 Sitzendorf figurine of a Nuthatch, Royal Worcester Trinket Dish and another
- 245 Beswick figure of a Bluetit (Number 992) and a Goebel figurine of a Wren
- 246 Beswick figure of a pair of kittens (Number 1296) and another German figure of a Daschund dog
- 247 3 German figurines of Siamese cats
- 248 Weatherby figurine of a Poodle dog, another of a camel and another of a cat golfer
- 249 Miniature Royal Doulton Character jugs of Tony Weller and Toby Philpotts
- 250 Small Royal Doulton Character jug of Long John Silver (Number D6386)
- 251 Royal Doulton figure of Old Charlie
- 252 Royal Doulton figure of Dick Turpin of similar style and size
- 253 Pair of Royal Doulton miniature figures 'Jesters'
- 254 2 miniature Royal Doulton figures 'Granny', 'Sam Weller' and small Toby Jug
- 255 Royal Doulton figure of Winston Churchill
- 256 Collection of 4 large Royal Doulton Character Jugs of D'Artagnan, (D6691) and his 3 Musketeers, Aramis (D6441), Athos (D6439) and Porthos (D6440)
- 257 Large Royal Doulton Character Jug of Tony Weller
- 258 Large Character Jug of Sam Johnson
- 259 Decorative Adams cheese dish and cover
- 260 Decorative table lamp, the central ball believed by William Moorcroft (Hibiscus design)
- 261 Large Amethyst Vug crystal

- 262 Large Citrine Vug crystal
- 263 Fine Doulton Lambeth late 19th Century grey and cobalt blue ground flower vase with floral decoration (26 high) believed by Louisa J. Davis and Elizabeth Hubert (small chip to base)"
- 264 Oval blue and white Alcock Willow patterned meat platter (small chip), and a decorative Cauldon handled compote
- 265 Decorative 4 piece cerise blue and apple green ground jug and bowl toilet set (1 piece damaged)
- 266 Decorative Ridgway dessert set of 2 pedestals, 9 plates the white ground with apple green leaf decoration
- 267 Decorative rectangular boat shaped early Derby fruit dish the white ground with green floral decoration
- 268 Large brown stoneware hunting jug in the Doulton style exterior decorated hunting and ale house scenes
- 269 Larger Doulton Lambeth stoneware jug the exterior with decorative hunting and ale house scenes
- 270 Smaller brown stoneware Doulton jug the exterior with raised cameos of deer hunting and ale house scenes
- 271 Early Majolica mask jug
- 272 Early salt glazed table salt
- 273 Large Torquay ware 'Lynmouth' text jug
- 274 Early blue and white 15 piece child's tea set
- 275 Valuable hand painted 19th Century plate depicting a horse drinking from a fountain with coloured floral garland border - possibly of Swansea factory origin
- 276 2 biblical late 19th Century blue and white Chinese vases and another (damaged)
- 277 Rare Maling purple ground lustre vase with gilt dragon decoration
- 278 Large 19th Century Chinese vase grey ground decorated blue traditional scenes (24" high)
- 279 Pair of Crown Devon urn shaped vases
- 280 Pair of multi-coloured Japanese squat vases and a rice bowl
- 281 Carrs crystal glass ship decanter with silver collar (Sheffield 2003)
- 282 Carrs crystal spirit decanter with golf ball stopper and silver collar (Sheffield 2001)
- 283 Small desk clock within Waterford Crystal conical glass case
- 284 Glass claret jug with metal handle (damaged) collar and lid lid
- 285 Fine cylindrical Bohemian green clear glass star cut flower vase
- 286 Pair of Victorian handled custard glasses
- 287 Fine early 19th Century Georgian rummer glass, ogee bowl rough pontil
- 288 Fine early 19th Century Georgian wine glass - rough pontil faceted stem etched vine leaves and grapes on bowl
- 289 Georgian rummer circular stem with rough pontil
- 290 Georgian rummer the circular base with polished pontil
- 291 Fine Georgian rummer with ogee bowl and rough pontil
- 292 Georgian rummer glass with rough pontil
- 293 Pair of early 19th Century wines and 2 others
- 294 4 Georgian wine glasses
- 295 Knop stemmed Georgian wine and a 19th Century liqueur glass with etched bowl and rough pontil
- 296 Pair of Georgian jelly glasses each with polished pontil
- 297 Pair of Georgian wine glass coolers each with polished pontil
- 298 Georgian finger bowl with polished pontil
- 299 Pair of Georgian cut glass wine glass coolers each with polished pontil
- 300 5 individual Victorian measuring jugs each with etched calibration
- 301 Onion shaped sherry decanter, heavy port decanter with ground stopper
- 302 Pair of onion shaped sherry decanters
- 303 Star cut glass wine decanter with rounded stopper
- 304 Ornate cut glass table lamp on circular plinth decorative segmented glass shade
- A VALUABLE PRIVATE COLLECTION OF CLARET JUGS INCLUDING:**
- 305 Cut glass claret jug with plated mount, lid and handle and another with plated lid and collar with glass handle
- 306 Cut glass claret jug with plated collar and handle and another taller with decorative handle
- 307 Claret jug with cut glass bowl and plated handle, lid and collar
- 308 Claret jug in similar style with etched glass decoration to bowl
- 309 Cylindrical etched glass jug with decorative plated handle and finial to lid and another with coiled effect glass bowl plated handle and loose plated lid
- 310 Star cut Victorian claret jug with engraved silver collar and lid (Sheffield 1866)
- 311 Star cut claret jug with silver plate collar and lid
- 312 Star Cut Glass claret jug with silver handle, collar and lid (Sheffield 1910)
- BOOKS**
- 315 Selection of reference books principally on clocks and watches
- 315 A Mixed books mainly with coloured spines
- 316 Mixed books including German warfare, Harry Potter and the Deathly Hallows, Giles Cartoon Annual etc.
- 317 Books on mixed subjects including the complete works of Shakespeare, English/French dictionary etc.
- 318 Interesting leather bound selection including Britain's Wonderful Airforce, Spons' Mechanic Book, wooden jigsaws etc.
- 319 Box of books on mixed subjects
- 320 Box of books on mixed subjects including 3 Observers books, Punch's Cap & Bell etc.
- 321 18 volumes of Just William exploits by Richard Crompton
- 322 Box of books principally on Historical Lincolnshire
- 323 Magpie lot of early historical, leather bound ledger and a large green bound scrapbook
- 324 Large selection of Grimsby Town football programmes

- and books on the Club
- 325 Selection of post cigarette and tea cards
- 326 Large selection of books on agriculture
- 327 Large selection of books on agriculture
- 328 Boxed selection of books principally of historical stories of the 2 wars
- 329 Large box of books on a variety of subjects
- 330 Box of books principally modern hardbacks on mixed subjects
- 331 Box of mixed novels, Readers Digest garden encyclopaedia etc.
- 332 Box including 6 volumes of the Second World War by Churchill, volumes by T.E. Lawrence etc.
- 333 Box of reference books and poetical books including Who's Who 1987
- 334 Box of paperbacked novels, social history etc.
- 335 Magpie lot Andy Capp scrapbook, photograph albums etc.
- 336 Box of novels, historical and social history
- 337 Box of books on mixed Lincolnshire subjects
- 338 Box of books on mixed subjects principally historical and social history
- 339 Box of books principally historical reference books on antiques etc.
- 340 Mixed selection of books including Wisdden 1949, other books on cricket, historical, early Pelican paperbacks etc.
- 341 Box of principally mixed novels
- 342 Large selection of gardening books
- 343 Box on mixed subjects including early school exercise books, Whittakers Almanack 1916 etc.
- 344 Volumes of 1950's motor racing magazines, early edition of Motor Cycling Manual etc.
- 345 Large selection of Agriculture magazines late 1940's
- 346 Selection of Journals of The Royal Agricultural Society of England 1950's, 1960's
- 347 Box of books principally on field sports including A Shooting Man's Creed by Joseph Nickerson
- 348 Various childrens annuals including Dandy, Beano etc.
- 349 2 large files of the images of World War II, volume The World at Arms etc.
- 350 File of The Market Rasen Mail for 1968
- 351 Editions of The Market Rasen Mail 1978
- 352 Editions of Market Rasen Mail 1980
- 353 Editions of Market Rasen Mail 1981
- 354 Editions of Market Rasen Mail 1982
- 355 Editions of Market Rasen Mail 1986
- 356 Editions of Market Rasen Mail 1986
- 357 Editions of Market Rasen Mail 1987
- 358 Editions of Market Rasen Mail 1988
- 359 Editions of Market Rasen Mail 1988
- 360 Mid 20th Century gentlemen's magazines, theatre programmes etc.
- 361 3 vols. A Fishermans Creel by Arthur Sharp, The Art of Salmon Fishing by Jock Scott and The Borders and Beyond by Able Chapman
- 362 Box of books of fishing subjects
- 363 8 vols. on shooting including 3 vols. of The Modern Shotgun by Major Sir. Gerald Burrard
- 364 Collectors lot including autograph book, cigarette card albums, maps, cards etc.
- 365 Lonsdale Library volume 27 on motor racing edited by Earl Howe, original dustcover
- 366 Selection of agricultural instruction manuals, Cullyer's Tables etc.
- 367 Most interesting selection of farmers diary's 1898 to 1915, cashbook ledger etc.
- 368 Vol. The Works of William Hogarth with many engravings dated 1833
- 369 2 vols. works of Edward Lear, Book of Nonsense, Nonsense Omnibus
- 370 Vol. of Debrett's Peerage & Baronetage 1980
- 371 W.W. II documentation, training manuals etc.
- 372 8 part leather bound vols. The Illustrated War News - WW I
- 373 8 part leather bound vols. - The Illustrated War News WW I
- 374 The Price Guide to Pot Lids by A. Ball (first edition)
- 375 The Price Guide to Pot Lids by A. Ball (second edition)
- 376 Vol. The Illustrated London News 1848
- 377 2 Vols. Universal Classic Manuscripts of renowned 15th to 19th Century individuals
- 378 Boxed 19th Century dissected Map of England
- 379 Kelly's Directory of Lincolnshire 1937
- 380 Large selection of The Lincolnshire Magazine mainly between 1932 and 1939
- 381 White's Directory of Lincolnshire 1882
- 382 White's Directory of Lincolnshire 1892
- 383 Kelly's Directory of Lincolnshire with the city of Hull dated 1900
- 384 Kelly's Directory of Lincolnshire with the City of Hull 1913 with original map
- 385 Kelly's Directory of Lincolnshire dated 1922 with original map
- 386 Kelly's Directory of Lincolnshire 1926 with original map
- 387 Kelly's Directory of Lincolnshire 1933 with original map
- 388 Vol. Henry Chaplin a Memoir 1926 (second edition)
- 389 Vol. The Fortunate Isles by Mary Stuart Boyd (first edition) 1911
- 390 Vol. British Rural Sports by Stonehenge dated 1888
- 391 Vol. Lincolnshire by John Bygot (first edition) 1952
- 392 Vol. Farming and Fox Hunting by George E. Collins, forward by The Right Honourable Earl of Yarborough 1914 (first edition)
- 393 6 vols. on The County of Lincolnshire
- 394 Mixed selection of reference and other books including 2 early vols. of Mrs Beetons Family Cookery
- ITEMS OF INTEREST TO THE COLLECTOR**
- 395 Green canvas bag of lawn bowls equipment including a set of four

- 396 Box of stoneware pippins, stewpots etc.
- 397 'Hicking' stick
- 398 Magpie lot of mixed collectables
- 399 Mixed coloured glass including paperweight pickle jar etc.
- 400 Kitchenalia including glass butter churn, tongue press etc.
- 401 Double lock metal gun cabinet
- 402 Magpie lot of cocktail shaker, ice bucket, leather cigar cases, photographic equipment etc.
- 403 A decorative 4 piece papier mache fruit set, L.P. records, oval plaque etc.
- 404 Mixed shells, 2 boomerangs, Australian prints etc.
- 405 Brown leather carrying case
- 406 Brown leather carrying case with straps
- 407 Brown leather gentlemen's travelling toilet case with interior fittings
- 408 Boxed Fowlers Universal calculator
- 409 Black leather travelling case fitted a 5 piece tortiseshell effect brush set
- 410 An early Venner Time Switch
- 411 2 early Sony 2 way communication sets
- 412 Aircraft Velocity Gauge in original box
- 413 Heavy metal LNER railway penalty gate sign
- 414 British Rail metal Booking Office sign
- 415 Selection of British Army Dinky toys
- 416 Rectangular metal Fowler's Patent Steam Plough Trade sign
- 417 Ruston & Hornsby brass trade sign
- 418 Metal Marshall of Gainsborough Brass trade sign
- 419 Scammell of Watford lorry sign
- 420 Oval metal sign ex. John Fowler & Co.
- 421 Rare brass Michelin Man sign
- 422 Essolene circular metal petrol sign
- 423 Set of old shop scales
- 424 2 green painted child's yachts, 1 with rigging
- 425 Boxed WWII gas mask etc.
- 426 WW II German aircraft gauge in protective brown painted case
- 427 Webley .177 air rifle
- 428 *BSA .22 LR MARTINI INTERNATIONAL RIFLE IN FOAM LINED BROWN LEATHER CARRYING CASE*
- 429 Royal Mail Millennium stamp collection
- IMPORTANT NOTE LOTS 830 TO 883 WILL BE SOLD IMMEDIATELY AFTER LOT 429**
- 430 Beginners album of stamps from British Empire and foreign countries
- 431 Strand stamp album containing a selection of interesting foreign and British Empire stamps, Stanley Gibbons stamp catalogue 1942, loose stamps etc.
- 432 7 WWI silk cards and other of the same period
- 433 Album of miscellaneous principally early 20th Century postcards approximate 150 in all
- 434 An album of approx. 100 mid 20th Century postcards
- 435 23 different Brooke Bond original albums in mint condition (no cards)
- 436 Magpie lot of miscellaneous cards, photographs, catalogues etc.
- 437 Approx. 1200 Brooke Bond tea cards
- 438 Box of mixed Wills and Players pre. 1940's cigarette cards (over 700 in all)
- 439 Large bundle of 2000 Tornado AD Comics c. 1979-1980
- 440 Magpie selection of catalogues, guides, old newspapers etc.
- 441 An album of approx. 350 postcards principally 1920's to 1930's
- 442 4 empty postcard/photograph albums in mint condition
- 443 Green leather Edwardian photograph album with brass clasp
- 444 Brown leather fitted toilet case and ox horn
- 445 Box of principally printing equipment, photographic plates etc.
- 446 Magpie lot of mixed collectables
- 447 Box of photographic glass plates
- 448 Liquid refreshment including Kiwi and Banana liqueurs, Babycham etc.
- 449 White painted Lloyd Loom child's basket crib on stand
- 450 Large wicker clothes basket
- 451 2 coloured umbrellas
- 452 Unused wood grained entertainment stereo console
- 453 Early 19th Century mahogany and brass vacuum pump by Harris of London
- 454 Mahogany framed Edwardian toilet mirror
- 455 Brown ground patterned carpet
- 456 Black early 20th Century telephone
- 457 Black early 20th Century telephone
- 458 Tin of marbles
- 459 Card and board games, jigsaws etc.
- 460 Mincer in original box
- 461 Brown leather ladies handbag
- 462 Kodak Brownie camera in canvas case
- 463 Set of wooden chess men in draught board box
- 464 Wicker needlework basket and contents, tortiseshell effect casket and hairbrush
- 465 Halina Reflex cinecamera in leather carrying case
- 466 Early 20th Century child's sewing machine 'Little Betty'
- 467 Mid 20th Century Sony FD-9B black and white t.v. watchman, boxed Sony audio adapter
- 468 Selection of sheet music
- 469 Selection of 78 rpm records
- 470 White painted child's dolls dresser with selection of blue and white miniature pots
- 471 Selection of unused boxed linen, silk scarves, handkerchiefs etc.
- 472 Selection of boxed and other table linen
- 473 Pine storage box with green felt lining
- 474 Selection of mixed principally British coins
- 475 Magpie lot of mixed European British and Middle East travellers coins

- 476 Selection of mixed principally British coins of 4 reigns
 477 Glove box of mixed coins, 4 QE II Crowns, Coronation tin etc.
 478 Tin of mixed British coins of 4 reigns
 479 Box of mixed coins including silver sixpenny and 3d pieces
 480 Large selection of British 3d pieces
 481 Watchmakers collectors lot of faces, cases, mixed dress jewellery etc.
 482 Large brown stoneware pippin
 483 Large brown stoneware mixing bowl
 484 Selection of lawn bowls
 485 Selection of lawn bowls
 486 Iron stew pot, iron weights, traps etc.
 487 Restored Planet JR hand hoe
 488 Restored hand held turnip drill
 489 Circular topped sciew adjustable stool on 3 splayed feet
 490 Black painted piano storage stool with woolwork padded seat
 491 Oak oval topped joint stool
 492 Metal safe ex. T. Cartwright and Son with brass mechanism
 493 Decorative iron fire basket
 494 Decorative iron fire basket
 495 Pool cue stand of 5 cues, triangle and set of balls
 496 FINE PINE MID 20TH CENTURY ROCKING HORSE
 497 Early Minimax wall mounted fire extinguisher
 498 Dolly tub and wooden posher
 499 Oak twist stemmed plant stand
 500 Oak stool with circular pink dralon padded seat
 501 Pair of garden stone pedestals
 502 Small clay chimney pot
 503 Rare Victorian wiremesh and brown painted bird cage
 504 4 compartment oak document rack

FISHERMANS CORNER

- 505 Pair of green fishermans waders (number 43)
 506 Pair of Orvis fishermans waders
 507 Canvas fishing bag and contents, and canvas game bag
 508 Box of fishermans accessories including scales, priest, salmon and trout flies etc.
 509 Brown fibreglass trout rod and a Bruce & Walker 14ft carbon salmon rod in disrepair
 510 Early cane brook trout rod
 511 Shakespeare Sigma graphite 2 piece 9ft 6inch. trout rod
 512 Millbro hollow fibreglass 9ft salmon/trout rod
 513 Shakespeare Worcester Fly, Boron 1727/420 14ft salmon rod
 514 'The Grayingham' 14ft. 3 piece salmon rod
 515 14ft, 3 piece salmon rod in similiar style
 516 Early bamboo 3 piece 15ft salmon rod
 517 Bruce & Walker 3 piece 15ft 6inch salmon rod
 518 2 rowing boat oars

- 519 Large game fishermans extending landing net
 520 Early 20th century Hardy Brothers wooden handled net with brass mount
 521 Thumbstick, and Snowbee portable rodstand
 522 Wading stick
 CARPETS
 525 Port ground patterned rug
 526 Port ground tassled rug 5' x 3'9"
 527 Larger Oriental rug in similar style 6' x 4'
 528 Port ground tassled patterned carpet 10'6" x 6'6"
 529 Turquoise green ground tassled carpet 7' x 8'

WOODEN COLLECTABLES

- 530 Useful kitchen wall tidy containing early 20th Century working accessories
 531 Oak canteen of 6 place setting unused Sheffield plated cutlery
 532 Inlaid rosewood jewellery box
 533 Oak sliding top cutlery canteen
 534 Rosewood fruit bowl with circular pedestal and a small framed picture of cock pheasants
 535 2 compartment oak cutlery box
 536 Pair of turned candlesticks each on circular plinths
 537 Small 2 shelf display cabinet fitted 2 rectangular glazed panels
 538 Dressmakers skirt marker
 539 Walking stick with plated handle
 540 2 compartment storage box in mixed wood with diamond shaped ivory escutcheon
 541 Walnut jewellery box with decorative inlay
 542 Decorative jewellery box with brass mounts, the interior lined in patterned green silk
 543 Mahogany jewellery box the interior with fitted pullout tray
 544 Walnut musical jewellery box
 545 Circular carved oak cased Aneroid Barometer
 546 Plated and brown leather bound jewellery box the interior with pullout green plush velvet drawer
 547 Painted souvenir treen box and another
 548 Decorative port ground leather glove box with raised equine decoration, the interior lined in buttoned green velvet
 549 2 compartment cutlery box
 550 Pair of antlers
 551 Long handled wooden pipe and another
 552 Treen Abacus
 553 Rectangular black leather cutlery box including a selection of pipes
 554 Rosewood cased spice box with brass handle and inlay, interior storage boxes
 555 An unusual carved storage cabinet fitted suite of 3 inner and another base drawer
 556 Converted oak cased sewing machine
 557 Oak cased sewing machine

BAROMETERS, CLOCKS & BINOCULARS

- 558 Modern Weathermaster barometer ex H. Samuel in oak case with thermometer dial
- 559 Modern 3-dial brass faced barometer in rosewood case
- 560 Oak domed cased mantel clock with steel dial
- 561 Inlaid rosewood mantel clock in shaped case on 4 brass bun feet
- 562 Domed cased inlaid rosewood mantel clock on 4 brass bun feet
- 563 Steel dial mantel clock in inlaid rosewood hooded case
- 564 Oak cased German mantel clock, circular face inset second hand dial
- 565 Oak domed cased mantel clock, brass mechanism
- 566 Oak cased Smiths Enfield mantel clock
- 567 Smiths Enfield mantel clock, brass mechanism in domed light oak case
- 568 Early 20th century oak cased Enfield mantel clock with steel dial
- 569 Steel dial pendulum mantel clock in mahogany case
- 570 Rectangular shaped mantel clock ex B. Fawcett & Co. of Leeds and London with advertising mirrored sign 'Guinness & Co. on Draft Extra Stout' all in hooded oak case with brass mounts
- 571 Decorative glass domed cased brass mantel clock on circular plinth, decorative enamel coloured garland dial inscribed 'Annual'
- 572 *DECORATIVE DOMED GLASS CASED SKELETON CHIMING MANTEL CLOCK, THE BRASS INTERIOR DEPICTING WESTMINSTER ABBEY, ALL ON MOTTLED WHITE MARBLE PLINTH ON BUN FEET*
- 573 Set of Swift 'Audubon Mark 2' binoculars in brown leather carrying case
- 574 Brass dialed barometer ex Curry & Paxton Ltd. with thermometer dial in twist stemmed oak decorative hooded case
- 575 Steel dialed aneroid barometer ex John Barker & Co. of Kensington with thermometer dial in carved oak case
- 576 German mid-20th century pendulum wall clock ex H.A.C. in dark oak case
- 577 Oak cased brass pendulum Westminster chime wall clock, the circular enamel and brass dial marked 'GB', painted Roman numerals
- 578 Inlaid walnut cased barometer, the steel dial marked Richardson of Goole, fitted upper thermometer dial
- 579 Oak cased brass pendulum Enfield wall clock with circular steel dial

PICTURES, PRINTS, MIRRORS, ETC

- 581 Ornate gilt framed crystoleum of a Victorian courting couple
- 582 Framed landscape watercolour signed F.E.H.
- 583 Ornate gilt framed print of ladies feeding sheep
- 584 Oval bevel edged hall mirror in beaded frame
- 585 Victorian framed print of Lady eating a pomegranate
- 586 Victorian framed biblical text embroidery
- 587 Gilt rectangular framed watercolour of mountainside

- loch scene
- 588 Modern gilt framed oil signed John Dale of a Lincolnshire landscape 'Somersby Scene'
- 589 Modern copy oil on canvas of sailing ship and man o'war in ornate gilt frame
- 590 Embroidery of woman and child in contemporary Hogarth frame
- 591 Framed watercolour of Paris canal beside Notre Dame, signed Mars
- 592 Ornate oval gilt framed mirror
- 593 Decorative oval gilt framed mirror
- 594 2 bevel edged mirrors
- 595 Marquetry panel, framed 19th century Nun's Prayer
- 596 Signed limited edition coloured print of a ruined Abbey, autumn crocus watercolour, etc.
- 597 Pair of modern gilt framed coloured Thelwell fishing prints
- 598 Pair of ornate gilt framed coloured prints one of a nude
- 599 Coloured print of a bulldog in Hogarth frame
- 600 Coloured print after Horatio H. Couldery of bulldogs fighting with a cat
- 601 Gilt framed print of a seated lady beside a bed of summer flowers
- 602 Gilt framed print of 2 young seated girls
- 603 Large signed copy still life oil of a bowl of fruit
- 604 Framed oriental bird and flower print
- 605 Framed copy oil of a young girl
- 606 Framed print by Vernon Ward of wild duck in flight 'Wild Alarm'
- 607 White painted framed watercolour of rural landscape, framed etching of a river in torrent and ebony framed coloured German dog print
- 608 Gilt framed coloured print of mountainside loch scene by Edwin A. Penley 1880
- 609 Unframed canvas of a seated man signed V.H. Vass 1945; damaged unframed watercolour of sailing boats beside a lane; 2 coloured landscape oils signed A.H., etc.
- 610 Large limited edition framed print signed by the artist David Shepherd 'The Old Forge'
- 611 Oak framed sepia print 'Scotland for Ever', the charge of the Scots Greys at Waterloo
- 612 Mahogany framed print of dancing young girls
- 613 Inlaid mahogany framed Berlin work religious embroidery
- 614 Pair of Herring's coloured fox hunting prints, 'The Meet' and 'End of the Day', both in contemporary ebonised frames
- 615 Signed limited edition print by Damien Gibson Watt of the Queen Mother attending the parade of Lincoln Reds at Royal Smithfield Show 1989 in contemporary gold painted frame
- 616 Ornate gilt framed mirror
- 617 Large goose girl print ex James Guthrie 1883 in modern gold painted frame
- 618 Watercolour of caravan scene signed W. Kay Blacklock in decorative Edwardian green and gilt frame
- 619 19th century black & white print in contemporary

- Hogarth frame
- 620 Framed racing print of horses at the water jump, signed Lug Pechaubes
- 621 Gilt framed watercolour of Worcester Cathedral
- 622 Pair of 18th century German oak framed oils on copper of ruined castle and riverside scene
- 623 Pair of coloured game prints in Hogarth frames
- 624 Framed CWS advertising print 'Jelly Marmalades'
- 625 Framed CWS advertising print 'Flowers and Vegetable Seeds'

JEWELLRY, SILVER, SILVER PLATE, WATCHES, BADGES, COINS & SMALL COLLECTABLES

- 629 Box of costume jewellery
- 630 Box of necklaces, brooches and misc. costume jewellery
- 631 Bone and coloured bead necklaces, variety of brooches
- 632 Selection of various coloured necklaces, 3 boxed gents cufflinks, etc.
- 633 Mother of pearl tea knives, eyeglass, etc.
- 634 Leather sachet of 5 various wrist watches
- 635 Misc. plated items, beaded dragon scent bottle, etc.
- 636 Pair of Victorian child's clogs
- 637 Various lapel badges, ladies wrist watch, tokens, etc.
- 638 Selection of British coins of 4 reigns
- 639 Selection of various glass bird and animals ornaments, 3 GB crowns, brooches, etc.
- 640 4 gentlemen's wrist watches, 3 with expanding straps
- 641 5 ladies wrist watches, 3 pairs gentlemen's cufflinks
- 642 9 gentlemen's wrist watches
- 643 Unused Oriana gentleman's wrist watch, Cross silver plated cased biro

CONTENTS OF DISPLAY CABINETS

- 644 Prehistoric scrapers, early buckle green glass bead, etc.
- 645 Brown mottled cigarette case, mixed coins, money box, etc.
- 646 Plated child's bracelet in decorative hand painted ring box
- 647 String of Rosita pearls in original box, tin of mixed necklaces and dress jewellery
- 648 Collection of presentation spoons, plated tankard, coloured glass necklace, etc.
- 649 Black belt with decorative beaded buckle, small leather purse
- 650 Green mottled cased Conway Stewart fountain pen with 14ct gold nib
- 651 Silver cased ladies fob watch
- 652 Queen Mother celebration birthday £5 coin and 10 QEII crowns
- 653 Mixed dress jewellery including boxed pendants, brooches, etc.
- 654 Derrick gentleman's wrist watch, 4 QEII crowns, George IV medallion, old pound note
- 655 Pair of Christian Dior cufflinks in original box, set of 6 plated teaspoons, 2 presentation plated teaspoons
- 656 WWII serviceman's bible, RAF tunic and lapel badges,

- etc.
- 657 Selection of Royal Navy long service and other badges, boxed Tass staff and crafts badge
- 658 WWI Rhine Army pass, war service lapel badge, miniature envelope photographs of Cologne, etc.
- 659 2 WWI war and victory campaign medals, 51990 for Private A.R. Kaye the Kings Own Yorkshire Light Infantry
- 660 Ladies Sekonda wrist watch, dress jewellery including crucifix necklace, bracelet, earrings, etc.
- 661 Child's silver bangle, Birmingham 1919
- 662 Child's bangle with 9ct gold lock clasp
- 663 3 gold signet rings
- 664 9ct gold child's bracelet
- 665 9ct gold chain 17" long, silver football medallion, Birmingham 1949 signet ring, etc.
- 666 Boxed pair of scallop shell spoons, Birmingham 1924
- 667 24 individual boxes of precious and semi-precious stones, all as identified
- 668 Boxed silver fork & spoon set, London 1939
- 669 Boxed set of 6 Victorian silver teaspoons, London 1895
- 670 Set of 6 silver pistol grip handled tea knives in original damaged presentation box, Sheffield 1909
- 671 5 boxed silver handled tea knives, Sheffield 1912
- 672 5 boxed decorative silver teaspoons, Sheffield 1914
- 673 Boxed collection of 7 silver cruets, Birmingham 1901
- 674 Silver christening porringer engraved CMG 1904 (6 ozs, London 1902)
- 675 3 cut glass silver lidded dressing table pots (Chester 1839, Birmingham 1902, Birmingham 1915)
- 676 Cut glass circular powder pot, the silver lid decorated 5 cherubs, Birmingham 1907
- 677 Pair of silver posy vases, Chester 1901
- 678 3 silver napkin rings, Birmingham 1903, 1948, Sheffield 1899
- 679 Pair of silver pierced circular bonbon dishes, Birmingham 1888
- 680 Decorative Victorian presentation spoon, London 1883, 3 silver teaspoons, London 1898, engraved jam spoon, Birmingham 1913
- 681 Mother of pearl handled silver pickle fork, mother of pearl handled butter knife, Birmingham 1885
- 682 Silver pin holder in shape of a swan, Birmingham 1921, heart shaped pill box and heart shaped silver pill box, London 1903
- 683 Silver cased fruit knife, Sheffield 1937
- 684 Silver candle holder, Birmingham 1915
- 685 Engraved gilt cased half hunter gentleman's pocket watch, the enamel dial painted Roman numerals, inset second hand, ex John Perry of Nottingham
- 686 Silver cream jug on circular plinth (2 ozs), Chester 1897
- 687 Boxed engraved silver napkin ring, Birmingham 1904
- 688 Silver handled butter dish on 3 spud feet, glass liner, knife and lid (6 ozs), ex Mappin & Webb, Birmingham 1945
- 689 Silver mustard pot, Chester 1913, with cobalt blue glass liner, plated spoon

- 690 Silver cocktail stick stand, Birmingham 1906
- 691 5 hallmarked early 19th century Georgian teaspoons (2 ozs), one Dublin 1828
- 692 Silver cigarette case (2.5 ozs), Birmingham 1904
- 693 Engraved silver cigarette case (3.5 ozs), Chester 1910
- 694 Horatio Nelson memorial medallion
- 695 Engraved silver cigarette case (3 ozs), Birmingham 1938
- 696 Engraved silver cigar case (5 ozs), Birmingham 1920
- 697 Victorian salt spoon, London 1838, Victorian mustard spoon, London 1877, weighted silver specimen vase, hallmark illegible
- 698 Pair of circular based weighted squat candlesticks, Birmingham 1960 and 1961
- 699 Decorative Hester Bateman Georgian silver cream jug on square plinth, monogram BEW (2.5 ozs), London 1809
- 700 5 dressing table pieces including 2 silver topped cut glass storage pots, hair brush with decorative plated top, etc.
- 701 Georgian silver salt on 3 claw feet, silver napkin ring, Birmingham 1939
- 702 Sterling silver green enamel rouge pot
- 703 Agate seal with small gold chain
- 704 Slave bangle, stamped 9C
- 705 Antique gilt 2 blue stone mount (one missing)
- 706 Boxed emerald and diamond dress ring, the band marked 18ct
- 707 Solitaire gents signet ring in 9ct gold band
- 708 Emerald and diamond 5 stone ring in 9ct gold band
- 709 Boxed 3 stone amethyst dress ring
- 710 Victorian longard chain
- 711 Purple stone amethyst heart shaped ring
- 712 3 clear stone dress ring
- 713 Magpie lot of 4 ivory and bone misc.
- 714 Victorian art nouveau pendant (stamped 9ct) and chain
- 715 Oval 9ct gold brooch inset purple glass stone
- 716 Charm bracelet
- 717 Cameo brooch and 3 other Victorian brooches
- 718 Locket and pendant, the latter stamped 9ct
- 719 4 Victorian lockets
- 720 Carved jade and gold pendant
- 721 Ornate silver fruit bowl with embossed decoration on circular plinth (14.5 ozs), Birmingham 1905
- 722 *ORNATE GEORGIAN TEAPOT ON OVAL STAND, THE POT WITH MONOGRAM 'BEW' (15 ozs all in), LONDON 1804, THE OVAL STAND ON 4 SPLAYED SPUD FEET (3.5 ozs), LONDON 1805*
- 723 *FINE SILVER LIDDED TANKARD (18.5 ozs), SHEFFIELD 1905,*
- 724 Signed photographs of the footballer Ronaldinho, Michael Schumacher and others
- 725 18ct gold signet ring
- 726 Edward VII sovereign, 1910
- 727 Multi Stone Diamond bracelet in original box
- 728 Multi stone eternity ring in original box
- 729 Platinum single ruby two diamond engagement ring in original box

HOUSEHOLD AND ANTIQUE FURNITURE

- 731 Edwardian mahogany inlaid drop leaf double gateleg table
- 732 Edwardian inlaid mahogany fall leaf bureau, fitted 3 long drawers
- 733 Oak dressing table
- 734 Mid 20th century oak display cabinet, fitted 2 glass shelves
- 735 Fall circular topped needlework table with silk lining and contents
- 736 Bed table and 2-teir dinner waggon
- 737 Nest of oak bookshelves and raffia seated bedroom chair
- 738 Mahogany fall leaf bureau fitted 3 long drawers on spud feet
- 739 Rectangular former gun cabinet fitted lower drawer with glazed leaded astrigal panel to front
- 740 Brown painted pine rectangular topped table
- 741 Pine nest of approx. 85 storage pigeon hole unit
- 742 Nest of approx. 74 pigeon hole units in similiar style
- 743 Nest of over 100 pigeon holes in similar style
- 744 Black leather studded travel trunk with domed top
- 745 Black painted pine screw down travelling trunk
- 746 Brown painted low cabinet inset 30 wine bottle rack
- 747 Pine corn bin with egg and ale crates etc.
- 748 Old ale barrell stand
- 749 Various childrens iron hoops
- 750 Bed table
- 751 Light oak bedside cabinet
- 752 Nest of 3 oak coffee tables
- 753 Rectangular side table
- 754 Rectangular walnut coffee table
- 755 Oak glass door music cabinet
- 756 Rectagular topped oak side table
- 757 Pine salting tub
- 758 Victorian iron surround fireplace inset cheeks, brass fronts, etc.
- 759 Dark oak dining room suite of refractory table and 4 chairs, the back and seats of each upholstered in mahogany leather, sold with an ornate carved oak side cabinet fitted upper and lower cupboards and 2 central drawers
- 760 Upright iron framed piano ex Wittons & Co. of London in light oak case
- 761 Nest of 32 large pine storage compartments
- 762 Victorian mahogany circular tilt topped table (40" dia) on tapering pedestal on 3 splayed feet
- 763 4 oak framed ladderback dining chairs
- 764 Pair of oak high backed arm chairs
- 765 Windsor hooped high backed fireside chair, the turned feet united by cross stretcher
- 766 Pair of mahogany framed Edwardian dining chairs, padded seats upholstered in floral contemporary cloth
- 767 Pair of mahogany oak framed wing salon chairs, each upholstered in crimson draylon
- 768 Georgian mahogany framed cross weave backed dining

	chair		glazed rectangular panels and 3 shelves behind, the lower portion with pullout fold down drawer, inset storage compartments and pigeon holes, double shelved cupboard below
769	Georgian shield backed armchair, padded seat upholstered in patterned pink draylon		
770	14 matching high backed mahogany dining chairs on spud feet, the seats of 10 in padded green leather , the 4 in padded light green woolwork cloth	800	Victorian fitted double wardrobe with inner fall top storage compartment, 2 lower drawers and 4 upper pullout drawers, full length mirror to central panel
771	Black leather office chair		
773	Oak framed bedroom chair	801	Victorian fitted single wardrobe with full length mirror to front, the interior with 4 pullout drawers and 3 fitted drawers, each with brass drop handles
774	Set of 4 balloon backed mahogany framed Victorian dining chairs, the back to one in need of repair		
775	Modern dining room suite of 6 spindle backed chairs and circular topped dining table	802	Brass banded pedestal plant trough with undershelf
776	Late 20th century oak dining chair with turned horizontal splat to back	803	Oak circular commode with interior pot fittings
777	Set of 6 ladderbacked dining chairs, one in need of repair	804	Circular marble topped shelved storage cupboard
778	Pink basket chair	805	Edwardian inlaid mahogany display cabinet, fitted 2 lined display shelves and backs, all on delicate splayed feet
779	Cushioned beige armchair	806	Victorian mahogany bow fronted chest of 2 short and 3 long drawers on bobbin feet
780	Cushioned fireside chair upholstered in contemporary floral cloth	807	Oak rectangular foldover swivel topped card table lined in brown beige
781	Modern 2 seater button backed sofa upholstered in contemporary floral cloth	808	Delicate inlaid early 20th century hall chair on tapering turned legs, the padded seat upholstered in light green draylon
782	Modern walnut bedside cabinet	809	Mahogany topped side table on tricorn base
783	Pair of D-end mahogany Victorian wash tables, each with white veined marble top (one broken)	810	Circular topped mahogany side table with pie crust edging on 3 ornately carved tricorn pad feet
784	Late 19th century mahogany sideboard fitted single drawer and double shelved cupboard below	811	Mahogany wind-up dining table with spare leaf (48" x 72" when fully extended)
785	Brown painted pine corn bin	812	Walnut display cabinet, the upper portion fitted 2 glass shelves, astrigal doors to the 2 front panels and side glazed panels, the lower portion fitted shelved cupboard all on claw feet,
786	Green basketware laundry box with padded seat	813	Double gate mahogany drop leaf dining table (43" x 70" when fully extended)
787	Oak 3-teir dinner waggon	814	Double gate mahogany drop leaf dining table (43" x 70" when fully extended)
788	Mahogany fold top side table	815	Fall leaf early 19th century mahogany bureau (40" wide) the inner section fitted 6 document drawers and open pigeon holes, the lower portion fitted 4 graduated long drawers with bobbin handles, all on bracket feet
789	Demi-lune side table on 3 tapering spud feet	816	Ornate early 20th century carved sideboard with hooded overmantel fitted large rectangular bevel edged mirror, the lower portion fitted 2 wing cupboards and 2 central drawers with brass drop handles and storage cupboard below (60 wide)"
790	Extending circular topped inlaid mahogany dining table (48" dia. extending to 60" long) turned splayed 4 claw feet	817	Nest of 3 oak glazed panelled bookshelves with dental frieze to top
791	Circular topped pedestal Victorian mahogany dining table (48" dia)	818	Ornately carved mahogany overmantel inset bevel edged kidney shaped mirror
792	Rectangular mahogany framed Victorian toilet mirror, fitted 3 small drawers	819	Mahogany fall leaf dining table (38" x 72" when fully extended)
793	Mahogany framed late 19th century toilet mirror, fitted single scrolled lower drawer	820	Inlaid 3 piece mahogany bedroom suite, single bed, dressing table fitted 2 trinket and 2 lower drawers and framed bevel edged mirror, double wardrobe with central rectangular bevel edged mirror and large cupboard below
794	Modern pine kneehole dressing table with 3 framed mirrored panels	821	Mahogany cello music stool with padded top
795	Victorian mahogany dressing table, fitted rectangular framed mirror, shaped storage compartment, 6 small upper drawers and single lower drawer, all on turned supports with undershelf	822	Mahogany music stool with padded seat
796	German heavy kneehole writing desk, fitted central drawer and 2 lower carved fronted pedestal cupboards, the top with part brown tooled leather writing aea		
797	Heavy carved oak Jacobean style sideboard, fitted 2 drawers and 3 cupboards below, upper overmantel (60" long)		
798	Mahogany kneehole desk, fitted central and wing drawers, the rectangular top inset black leather writing area		
799	Victorian bureau bookcase, the upper portion fitted 2		

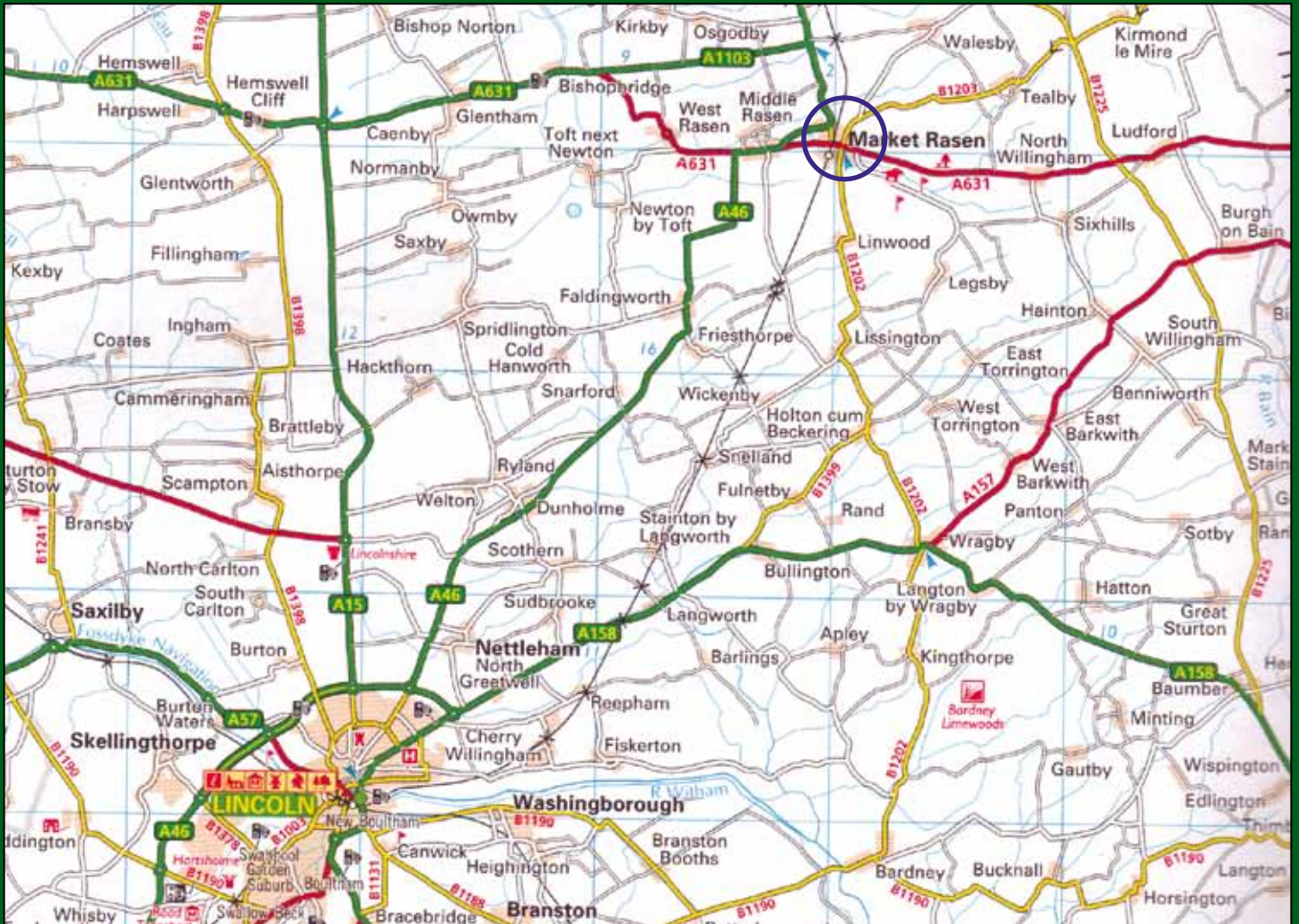
- 823 Brass standard lamp and tasselled beige satin shade
- 824 Early 20th century sideboard in American walnut, fitted 2 carved fronted wing cupboards, 2 central and 2 wing drawers, all with ornate brass handles
- 825 Fine oak roll topped desk, interior fittings including open pigeon holes and drawers, the lower pedestal fitted central and 4 wing drawers to either side
- 826 Oak framed cane seated dressing table stool
- 827 Reproduction walnut serpentine fronted drop ended small chest of 3 drawers on splayed tapering spud feet
- 828 Mahogany framed bevelled edged overmantel mirror
- THE FOLLOWING LOTS WILL BE SOLD IMMEDIATELY AFTER LOT 429**
- METALWARE**
- 830 Plated entree dish
- 831 Mixed cutlery
- 832 Variety of ale mugs, plate ware etc.
- 833 2 pipe cutters
- 834 Selection of old tins
- 835 Plated entree dish
- 836 Plated entree dish
- 837 Misc. boxed cutlery
- 838 Tray of misc. small brass items
- 839 George VI boxed Coronation spoon, cut throat razor etc.
- 840 Boxed set of 6 plated marrow scoops ex. Walker & Hall of Sheffield
- 841 Plated teapot with white bean handle to lid
- 842 Pair of brass candelsticks
- 843 Pair of brass candlesticks
- 844 Early set of Salter brass scales
- 845 Mounted brass eagle on grey veined marble plinth
- 846 Brass wheel hub ex. Cooke & Sons of Lincoln and 2 brass weights
- 847 Railway lamp stamped Mkt. Rasen
- 848 Long handled brass hunting horn
- 849 Plated cigarette box, picture frame and blue tit bird framed print
- 850 Set of 6 pewter handled measures
- 851 Brass oil lamp
- 852 Brass oil lamp with decorative etched green glass shade
- 853 Brass milk skimmer and toasting fork
- 854 Oak cased canteen of plated cutlery and 2 boxes of plated cutlery
- 855 Selection of horse brasses marked Market Rasen
- 856 Brass blow lamp
- 857 Copper plant trough
- 858 Copper kettle with brass handle
- 859 Brass fireside shelf tidy
- 860 Brass letter rack and a copper plant trough
- 861 Brass slipper box
- 862 Copper and brass oil lamp on pierced metal base
- 863 Brass oil lamp with glass flue
- 864 2 copper vases
- 865 Brass model of a Lancaster and another of a Spitfire
- 866 Various brass framed plaques
- 867 Brass kettle with amber glass handle
- 868 Brass kettle on stand
- 869 Decorative copper shell effect fruit bowl on plinth
- 870 2 decorative circular brass trays
- 871 3 pewter ale tankards
- 872 Brass companion set
- 873 Brass dinner gong
- 874 Large copper kettle
- 875 Copper fire kerb
- 876 Set of long handled fire irons with a pair of fire dogs
- 877 Copper coal scuttle with brass handle
- 878 Brass coal scuttle
- 879 Decorative brass fireguard
- 880 Brass coal scuttle
- 881 Circular brass planter with lion mask handles
- 882 Pierced brass fender
- 883 Travelling case and a ladies umbrella



Conditions of Sale

1. The highest bidder shall be the buyer. If any dispute arises the Auctioneers have absolute discretion to settle the dispute or to re-offer the lot. At the fall of the hammer every lot shall be at the risk of the buyer and the purchaser shall give to the Auctioneers his name and address and shall (if required) pay down the whole of the purchase money or any sum required by the Auctioneers and any deposit so paid shall be taken as in part payment of the whole of the lots purchased.
2. The Auctioneers have absolute discretion to divide any lot, to combine any two or more lots, to withdraw any lots, to refuse bids and to regulate the bidding. They may bid on the Vendor's behalf for all goods which are being offered subject to a reserve or at the Auctioneers discretion. By the making of a bid the buyer acknowledges his acceptance of these Conditions and the terms of any Notices and other Condition in the catalogue.
3. The Auctioneers shall determine the amount of advance of each bidding and no bidding shall be retracted.
4. Settlement of all accounts must be in cash or by banker's draft. No exception can be made to this condition and intending purchasers are advised to make the necessary arrangements before the sale.
5. Every lot is sold with all faults and error of description and the Auctioneers disclaim for themselves and the Vendor, all responsibility for authenticity, age, origin, condition or quality. All statements on such matters, whether printed in the catalogue or made orally, are statements of opinion and not representations of fact. Purchasers are deemed to have satisfied themselves on authenticity, condition etc. before bidding and no-one in the Auctioneers' employment has authority to make any representation of fact.
6. Care will be taken of all lots purchased as far as possible until their removal but the Auctioneers will not be answerable for any loss or wrong removal of any lot or lots or for uncleared lots, loss of life or damage that may take place during the sale.
7. No lots to be transferred and no lots to be removed during the time of the sale.
8. The Auctioneers act as Agents only and they disclaim responsibility for default by either buyer or seller. They accept no responsibility in connection with the commissioning of members of their staff to bid for lots on behalf of intending purchasers. Instructions given by telephone are accepted at the sender's risk and must be confirmed in writing forthwith. The Auctioneers do not guarantee the title of any lot or lots sold by them and will not be responsible for any defect in such title.
9. If any buyer fails to comply with any of the above conditions the damages recoverable from the defaulter shall include all loss arising from any re-sale of the lot together with the charges and expenses in respect of both sales and any money deposited in part payment shall be held by the Auctioneers against the defaulter's liability.
10. Any damage done to the premises or contents thereof by removal of any of the lots shall be made good by the purchaser. Principals being responsible for act of their servants.
11. Third Party Liability. Every person attending this sale at the time shall be deemed to be there at his own risk and with notice of the condition of the premises and of the method of arranging furniture etc. He shall have no claim against the Auctioneers in respect of any injury he may sustain or any accident which may occur.
12. Value Added Tax. If you require an invoice, this catalogue must be retained as evidence of any lot(s) purchased.
13. A buyer's premium of 15% inclusive of VAT will be charged in addition to the purchase price.
14. Under new Legislation no cash transactions of 15,000 Euros (approx. £10,000) or over can be accepted.

Corn Exchange Chambers, Queen Street, Market Rasen, Lincolnshire LN8 3EH







Perkins, George Mawer & Co.
Corn Exchange Chambers,
Queen Street,
Market Rasen,
Lincolnshire.
LN8 3EH

Tel: 01673 843011
Fax: 01673 844072
Email: info@perkinsgeorgemawer.co.uk

www.perkinsgeorgemawer.co.uk