



## The Paddock, Long Lane

East Drayton | Retford | Notts | DN22 0LW

By Auction £580,000 - Starting Bid



**Perkins George Mawer & Co.**

Chartered Valuation Surveyors & Estate Agents,  
Agricultural & Fine Art Auctioneers.

# The Paddock

Long Lane | East Drayton  
Retford | Notts | DN22 0LW

By Auction £580,000 - Starting Bid



BEING SOLD BY SECURE ONLINE BIDDING - £600,000 STARTING BID

A rare opportunity to acquire a beautifully appointed two-bedroom detached dormer bungalow with further planning permission granted for a two-storey extension. The property is set in approximately 1.88 Acres, with a further planning permission, if required, for 4 individual traveller's pitches.

- FOR SALE BY SECURE ONLINE BIDDING via PATTINSONS
- Detached dormer bungalow- Set in 1.88 Acres
- Modern high quality finish
- STARTING BID £600,000
- 2-Bedrooms and open plan living
- Planning Permission to extend and add traveller pitches

## Location

East Drayton is an attractive and popular residential village, with a well-known public house and church. Tuxford, with range approximately of local shops, doctor's surgery, chemist, primary school and well-respected secondary school, Tuxford Academy, is 7.9miles away.



The attractive Georgian town of Retford, with further range of amenities and train station is also within convenient travelling distance. Nearby Newark and Retford train stations provide a direct main-line service to London Kings Cross. The A1 is accessed at Markham Moor giving further excellent communication links vis M1/M18 to the surrounding areas, major cities and towns. The area is well served by both public and private schools, golf, sporting and leisure facilities.

### Description

A beautifully appointed two-bedroom detached dormer bungalow with further planning permission granted for a two-storey extension which will provide a further bedroom, two en suites and dressing room accommodation. The property has a useful enclosed exercise area, utility block including dog wash/grooming area, all set within grounds extending to approximately 0.761 hectares (1.88 acres).

The property has further planning permission, if required, for 4 individual traveller's pitches. The property occupies a delightful rural location with fine views over open countryside, ideal for those with equestrian, canine or rural interests.

The well appointed accommodation with LPG central heating system, oak effect UPVC double glazing, attractive marble tiling, oak internal doors and skirtings briefly comprises luxury fitted open-plan diningkitchen, sitting room, cloakroom with WC, stairs to two first floor bedrooms, luxury house bathroom, further planning permission passed for two storey extension. Impressive gated private drive-way, utility block, and exercise area, extensive gravel courtyard with parking for several vehicles.

The property occupies an attractive rural location but is within convenient travelling distance of the area's major towns and cities.  
Lincoln | 16.5miles, Tuxford | 7.9 miles, Retford | 7.7miles, Newark | 12.6miles, Nottingham | 33.1 miles, A1 Markham Moor | 8.3miles. (All mileages are approximate).

### Planning

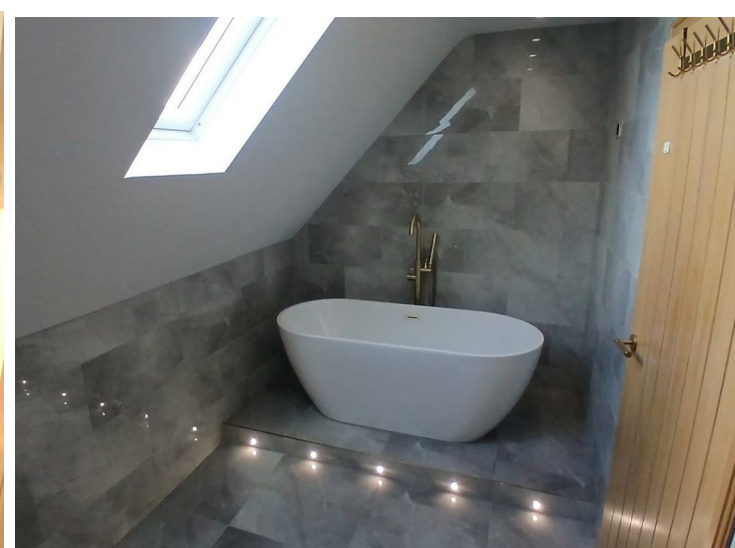
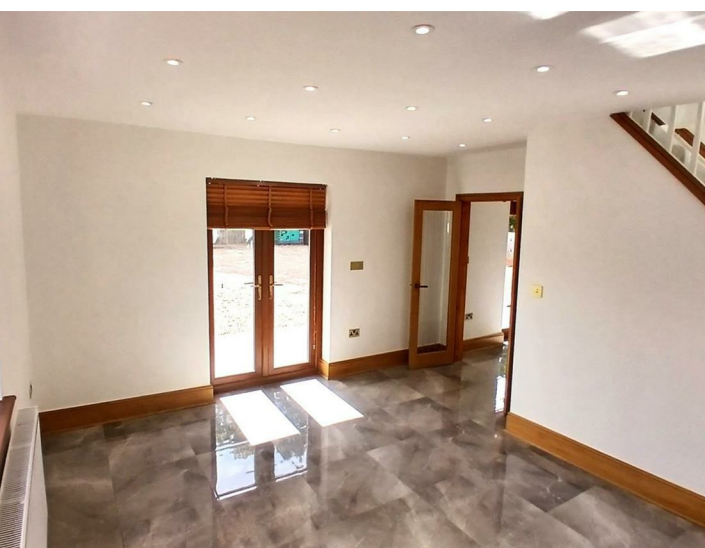
Planning granted for two Storey side extension 24th June 2024. Ref 24/00491/HSE

Planning permission granted for extension of traveller site with four additional pitches. Planning Ref 3/01023.

All queries regarding planning matters should be addressed to:

Bassetlaw District Council Planning Dept, Queens Buildings, Potter Street, Worksop, Retford, Notts, DN22,

Email: [customer.services@bassetlaw.gov.uk](mailto:customer.services@bassetlaw.gov.uk) | Tel: 01909 533533



## Accommodation

### Kitchen/Dining Room

23'6" x 21'3" (7.18 x 6.48)

Oak-style UPVC stable door opens out into superb, luxury fitted solid wood kitchen.

Twin ceramic sink unit set into marble worktops with cupboards and drawers below, with brass-style handles, with integrated dishwasher, integrated pull-out bin. Lamona microwave set into oven surround with cupboards above and below, flanked to one side by recess for American-style fridge-freezer, with matching side cupboards above and below. Matching range of wall cupboards with cornice over concealed lighting below. Matching canopy with recess for range-style cooker (Chef master 5 ring LPG with hotplate and twin ovens, warming oven, grill - available by separate negotiation). Matching overhead canopy has concealed cooker hood and cornice. Central matching breakfast island with marbled worktops, cupboards below.

Marble tiled floor, 2 double radiators, recess for large screen TV flanked by open storage shelving, recessed ceiling lighting. (Media wall provision). Oak-style UPVC double glazed French doors. Brass-style electrical facias, all lights on dimmer switches. Light oak glazed double doors open out into -

### Sitting Room

15'11" x 14'11" (4.86 x 4.56)

Oak-style double French doors, twin matching double-glazed windows, double radiator, recessed ceiling lights on dimmer switch, bracket and fittings for TV.

### Cloak Room

With oak door and low flush WC, incorporating a vanity washbasin with cascade mixer tap and tiled floor.

Staircase rises from the sitting room to first floor landing with recessed ceiling lighting, double radiator, fitted oak doors with brass door furniture to all rooms, smoke detector.

### Bedroom 1

13'8" x 11'9" (4.17 x 3.59)

With end arched feature oak-style UPVC double glazed window, double glazed Velux, built-in ladies and gentleman's hanging wardrobes, oak skirtings, bracket and power points for TV, double radiator and recessed ceiling lighting on dimmer switch.

### Bedroom 2

13'8" x 11'9" (4.17 x 3.59)

End arched feature oak-style UPVC double glazed window, with views over adjoining paddock/plots with fine views of open countryside beyond. Double radiator, ladies and gentleman's hanging wardrobes, TV point.

### Master Bathroom

12'3" x 7'0" (3.74 x 2.14)

Vertical brass-style radiator, free-standing tub-style bath with side pillar tap and shower attachment. Low flush WC, pedestal washbasin, mixer tap, extractor fan, double glazed Velux roof light, marble tiled floors and walls.

### Utility Block

#### Utility Room / Wet Room

10'11" x 10'8" (3.35 x 3.27)

Mermaid boarding and glass screening to walk-in shower area with floor drain. Worktop with plumbing for washing machine, extractor fan, tiled floor, electric ladder radiator.



## Day Room

10'8" x 16'2" (3.26 x 4.93)

With mermaid boarding to the corner. Tiled floor, Water point, electric point, recessed ceiling light and extractor fan with chromed electrical fittings. Oak-style UPVC French doors. Currently used as dog wash/grooming area).

## Grounds

The property has an impressive recessed double-gated entrance to large graveled courtyard and turning area with raised brick planter and further concrete standing area for vehicles to the side of the bungalow, with planning permission for further extension.

Gated access leads through to hedged paddock area, with planning permission for Four Traveller pitches with power installed.

Septic tank located within the field.

There is a water supply to the corner of the courtyard and power points.

The rear of the paddock area is already lit and has power installed to the individual plots.

The site and paddock extend to approximately 0.761 Hectares (1.88 acres), or thereabouts.

## General Remarks

### Tenure

The property is understood to be freehold.

### Services

Mains, water and electricity are understood to be installed. Drainage is to a private septic tank. LPG fired central heating is connected to the bungalow. Services have not been checked or tested and purchasers should make their own enquiries.

## Method of Sale

The property is offered for sale by Auction via Pattinson Auction House secure online bidding.

## Plans, Areas & Schedules

These have been provided as accurately as possible from OS Data Sheets. These are published for your convenience and whilst they are believed to be accurate this is not guaranteed, nor will they form part of any contract for the sale plan.

## Easements and Rights of Way

The land is sold subject to and with benefit of all rights of way whether private or public; drainage, water, electricity and any other rights, easements, wayleaves etc referred to or not in these particulars.

## Council Tax

TBC

## Buyer Identity Check

Purchasers will be required to provide the necessary identification for the purposes of the anti-money laundering regulations.

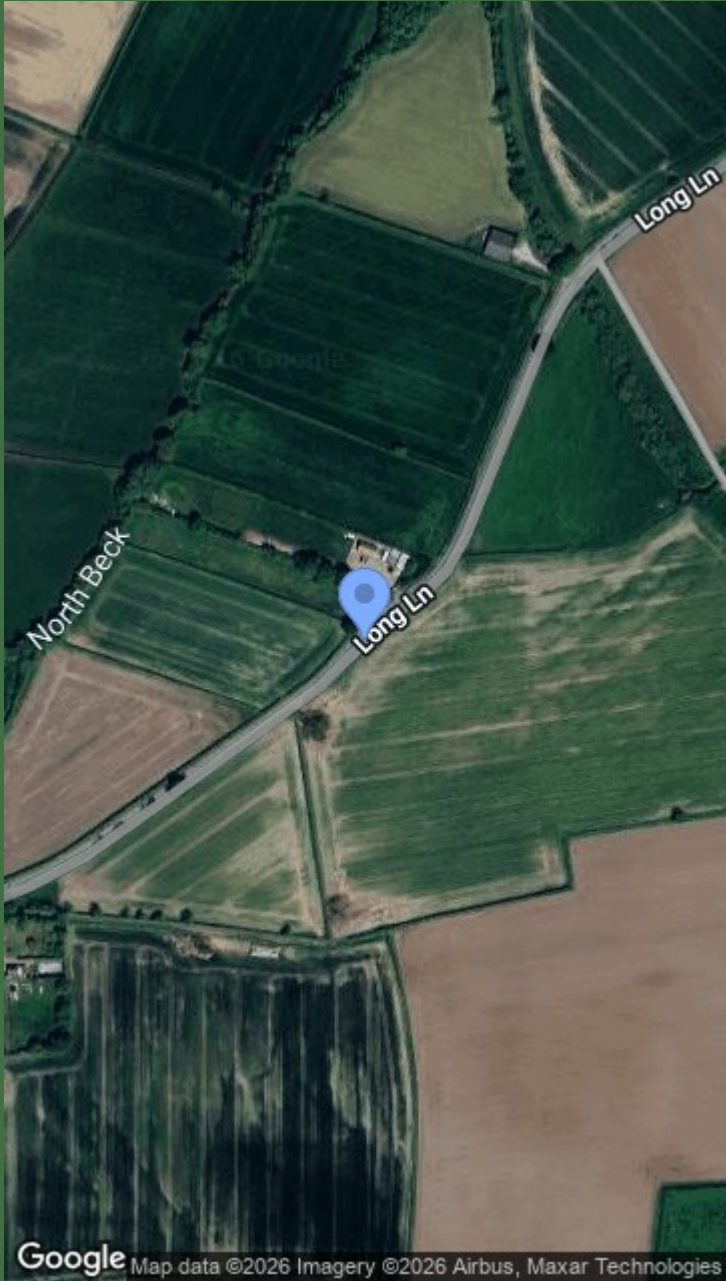
## Viewing

All viewings strictly by appointment only - via the Joint Agent.

## Joint Agent

Silcock & Partners  
Gamston Wood Farm, Upton, Retford, Nottinghamshire  
DN22 0RB  
01777 717559 / 07540 578530 |  
Info@silcockandpartners.co.uk





**Perkins George Mawer & Co**

Corn Exchange Chambers

Queen Street

Market Rasen

Lincolnshire

LN8 3EH

01673 843011

[info@perkinsgeorgemawer.co.uk](mailto:info@perkinsgeorgemawer.co.uk)

[www.perkinsgeorgemawer.co.uk](http://www.perkinsgeorgemawer.co.uk)

Agents Note:

Whilst every care has been taken to prepare these particulars, they are for guidance purposes only. All measurements are approximate and are for general guidance purposes only and whilst every care has been taken to ensure their accuracy, they should not be relied upon and potential buyers/tenants are advised to recheck the measurements.