



1B, Kingsway

Tealby | Market Rasen | LN8 3YA

£850 PCM



Perkins George Mawer & Co.

Chartered Valuation Surveyors & Estate Agents,
Agricultural & Fine Art Auctioneers.

1B

Kingsway | Tealby

Market Rasen | LN8 3YA

£850 PCM

THE EPITOME OF BEAUTY! A lovely, deceptively spacious 3 bedroom cottage in the very popular and sought after village of Tealby. Conveniently positioned opposite the quintessential country pub, the Kings Head.

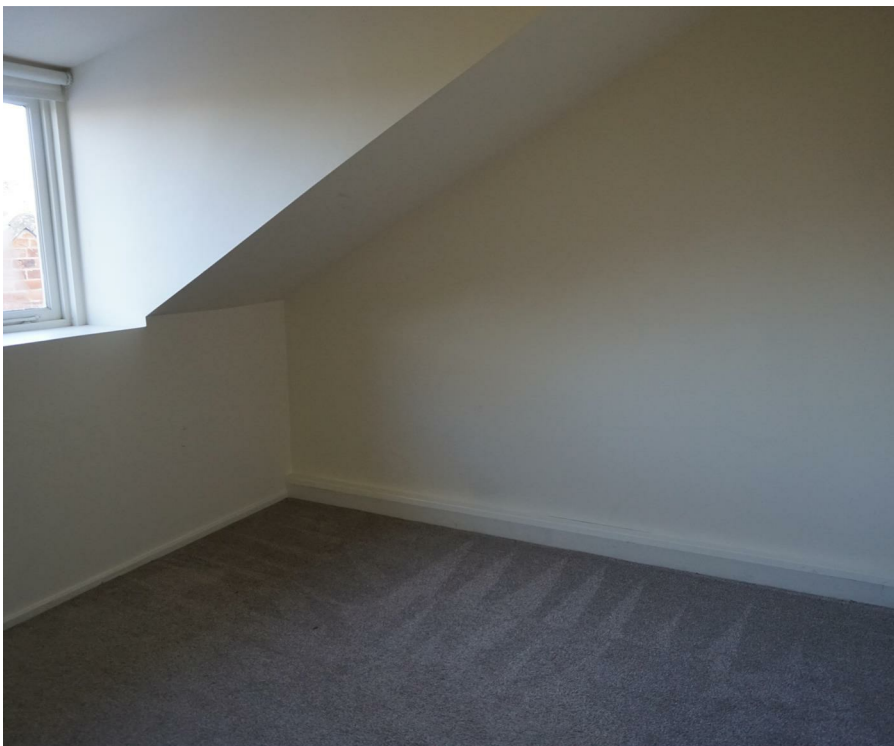
A handy porch greets you to the front, leading to an open plan arched hallway, large living room with feature log burning stove, wooden beams and dual aspect windows. Country style kitchen / diner with integrated appliances, and a handy utility space.

On the first floor there are 2 adequately sized bedrooms and a Master bedroom with built wardrobes. Modern, larger than average family bathroom with shower over bath. To the outside space there are front and back gardens, and a useful garage.

Tealby is a village and civil parish in the West Lindsey district of Lincolnshire, England, situated on the edge of the Lincolnshire Wolds and 3 miles north-east of Market Rasen.

- Deceptively Spacious Cottage
- Beautiful Village Position
- Kitchen/Dining Room
- Living room
- Three Bedrooms
- Bathroom
- Garden Front & Rear
- Garage







Energy Efficiency Rating

	Current	Potential
Very energy efficient - lower running costs		
(92 plus) A		
(81-91) B		
(69-80) C		
(55-68) D		
(39-54) E		
(21-38) F		
(1-20) G		
Not energy efficient - higher running costs		
	70	85
England & Wales	EU Directive 2002/91/EC	



Perkins George Mawer & Co
 Corn Exchange Chambers
 Queen Street
 Market Rasen
 Lincolnshire
 LN8 3EH

01673 843011
info@perkinsgeorgemawer.co.uk
www.perkinsgeorgemawer.co.uk

Agents Note:
 Whilst every care has been taken to prepare these particulars, they are for guidance purposes only. All measurements are approximate and are for general guidance purposes only and whilst every care has been taken to ensure their accuracy, they should not be relied upon and potential buyers/tenants are advised to recheck the measurements.